

MOLLY NAILS UV/LED NAIL LAMP V10BAT CORDLESS

Model: V10BAT

Certificate No.: 20240422001, 20240422101, 20240422201



TECHICAL DATA:

Power: Max 36W

LED Power Irradiance: Equivalent to 60W CCFL lamp

Nominal input: 100-240V 50/60 Hz

Nominal output: DC 12.6V 1.9A

Number of UV LEDs: 36 pcs

Battery capacity: 11.1V 2600mAh 28.86Wh

Wavelength: 365+405nm

1. SAFETY OF USE:

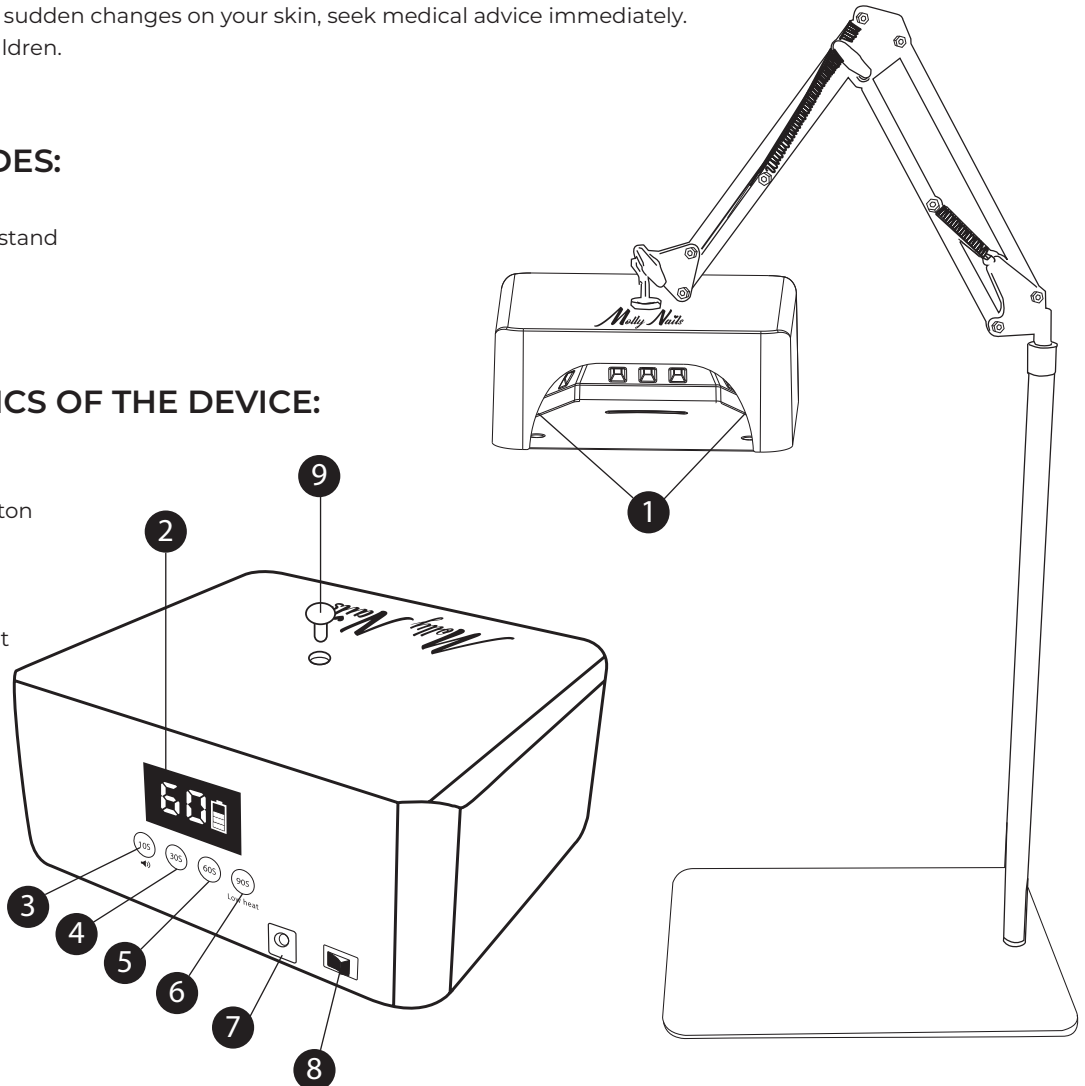
1. Please read this instruction carefully before using.
2. Please charge the machine fully before using it for the first time.
3. This machine is powered by rechargeable lithium battery. If it is not used for a long time, the battery needs to be charged once every 3 months to prevent excessive power depletion to shorten the battery life, resulting in battery bulge, The battery cannot be charged and other problems.
4. If the battery fails to charge, it is damaged. Do not attempt to use it.
5. When not using the nail lamp, please turn off the power switch of the machine in time to avoid prolonged battery standby, power loss and shorten the battery life.
6. Do not use nail gel remover, alcohol and other chemical products to clean the machine to avoid chemical infiltration into the machine, resulting in battery circuit short safety issues, bulbs falling off and crash problems.
7. Do not use a damaged power supply.
8. The single long lighting time should not exceed 600 seconds to avoid reducing the service life of the product.
9. Please note that making self-switches and changes to your device is prohibited and equivalent to the loss of warranty.
10. Do not stare directly at the UV light, which can cause eye damage. The lamp uses UV/LED diodes that emit dangerous UV rays. They can also cause skin damage. The skin may be more sensitive to UV rays when taking medication or using cosmetics. If you notice sudden changes on your skin, seek medical advice immediately.
11. Keep out of reach of children.

2. THE SET INCLUDES:

- V10BAT Lamp
- Foldable, 360° rotating stand
- AC Adapter
- User manual
- Warranty card

3. CHARACTERISTICS OF THE DEVICE:

1. Infrared sensor
2. Digital display
3. 10 s / Buzzer switch button
4. 30 s button
5. 60 s button
6. 90s / Low Heat button
7. Power cord input socket
8. ON/OFF button
9. Folding bracket connecting nut



4. DEVICE DESCRIPTION:

The VIOBAT nail lamp is specially designed for pedicure and manicure. It enables fast curing of hybrid nail polishes, LED gels, and builder gels.

5. HOW TO USE:

1. **Connect the adapter** - use only the original 12.6V 1.9A adapter. Using an incorrect or non-certified 12.6V 1.9A adapter may damage the device or prevent it from charging properly.
2. After turning on, the default setting is 60 seconds. Once the hand is placed inside the lamp, the LED display begins counting down from 60 s, the UV light turns on, and switches off after 60 s. If the hand is removed during operation, the UV lamp turns off and the LED display resets to 60 s.
3. Press the 10s, 30s, or 90s button to change the curing time. The UV lamp will turn on immediately, and the LED display will start counting down. Removing the hand will turn off the UV light, and the LED display will reset to the current setting.
4. **90-second Low Heat Mode** - the lamp power gradually increases, reducing heat sensation during gel curing.
5. **Buzzer sound function** - if the user wishes to disable the beep sound when switching the lamp ON/OFF, press and hold the 10s button for 2 seconds to turn off the buzzer.
6. **Low battery indicator** - when the battery level drops below 15%, the battery symbol starts flashing, indicating low power. To continue use, connect the adapter for charging. During charging, the battery symbol flashes, and when fully charged, all four battery segments remain lit.
7. **Battery charging time** - full charging takes about 3 hours. A single full charge allows more than 3 hours of operation (depending on the type of product being cured).
8. If device will not be used for more than 30 minutes, turn it off to extend battery life.
9. **Do not use the lamp while charging**, to protect the lithium battery.
10. Use only the original 12.6V 1.9A power adapter. If the voltage exceeds 17V, an alarm will sound and the display will show "OU".



In accordance with art. 13 sec. 1 of the Act of 11 September 2015 on used electrical and electronic equipment (Journal of Laws 2015 item 1688), we inform you about the correct handling of waste electrical and electronic equipment:

1. It is prohibited to place used electrical and electronic equipment together with other waste - this is confirmed by the marking in the form of a "crossed-out bin", which requires selective collection of this type of waste.
2. Electrical and electronic devices may contain hazardous substances, mixtures and components, which, after entering the environment, may pose a serious threat to the health and life of humans and living organisms.
3. Used electrical and electronic equipment should be transferred only to authorized collection points, the list of which should be included on the website of each Municipal Office.
4. Households play a key role in the waste management system for used electrical and electronic equipment due to the possibility of their direct transfer to authorized collection points and the elimination of undesirable social habits resulting in leaving waste equipment in places not intended for this purpose.



In accordance with Directive 2006/66/EC of the European Parliament and of the Council of 6 September 2006 on batteries and accumulators and waste batteries and accumulators and repealing Directive 91/157/EEC, this product is marked with the symbol of a crossed-out wheeled bin. The symbol indicates that the batteries or accumulators used in this product should not be disposed of with normal household waste. Users of batteries and accumulators must use the available collection network for these items that enables their return, recycling and disposal.

IMPORTER
Molly Lac
Michał Szewczyk
ul. Piotrkowska 270
90-361 Łódź, Polska
uwagi@mollylac.com
www.mollylac.com

Made in PRC